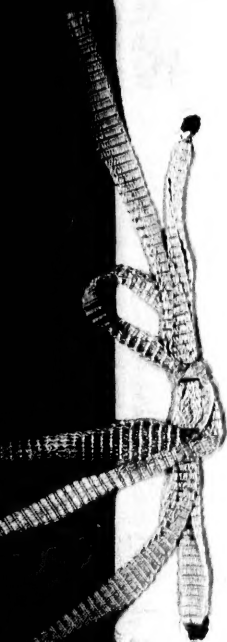
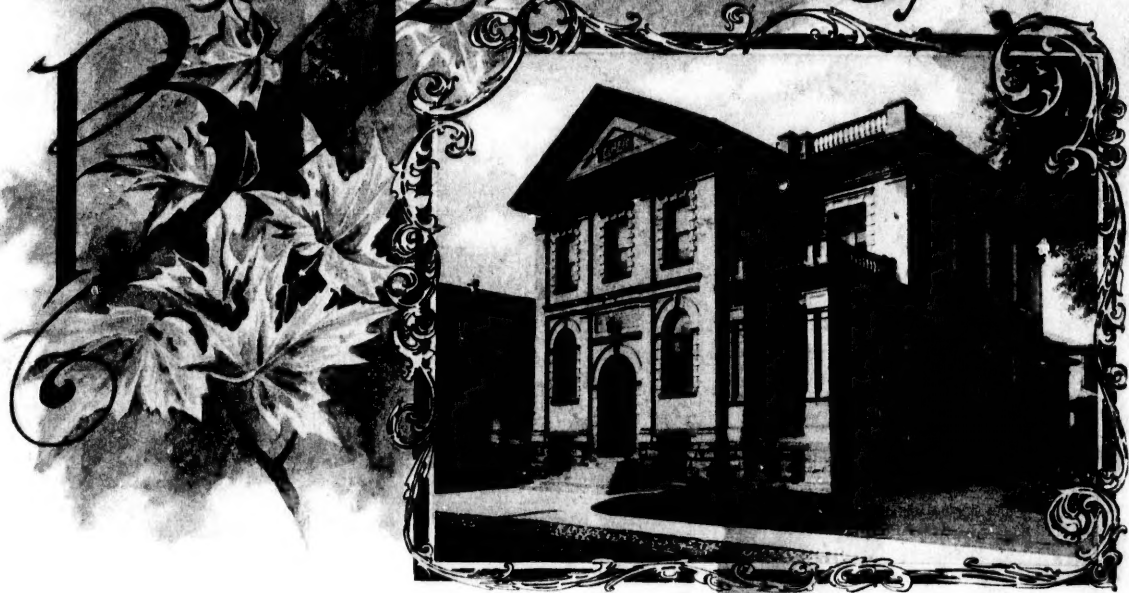
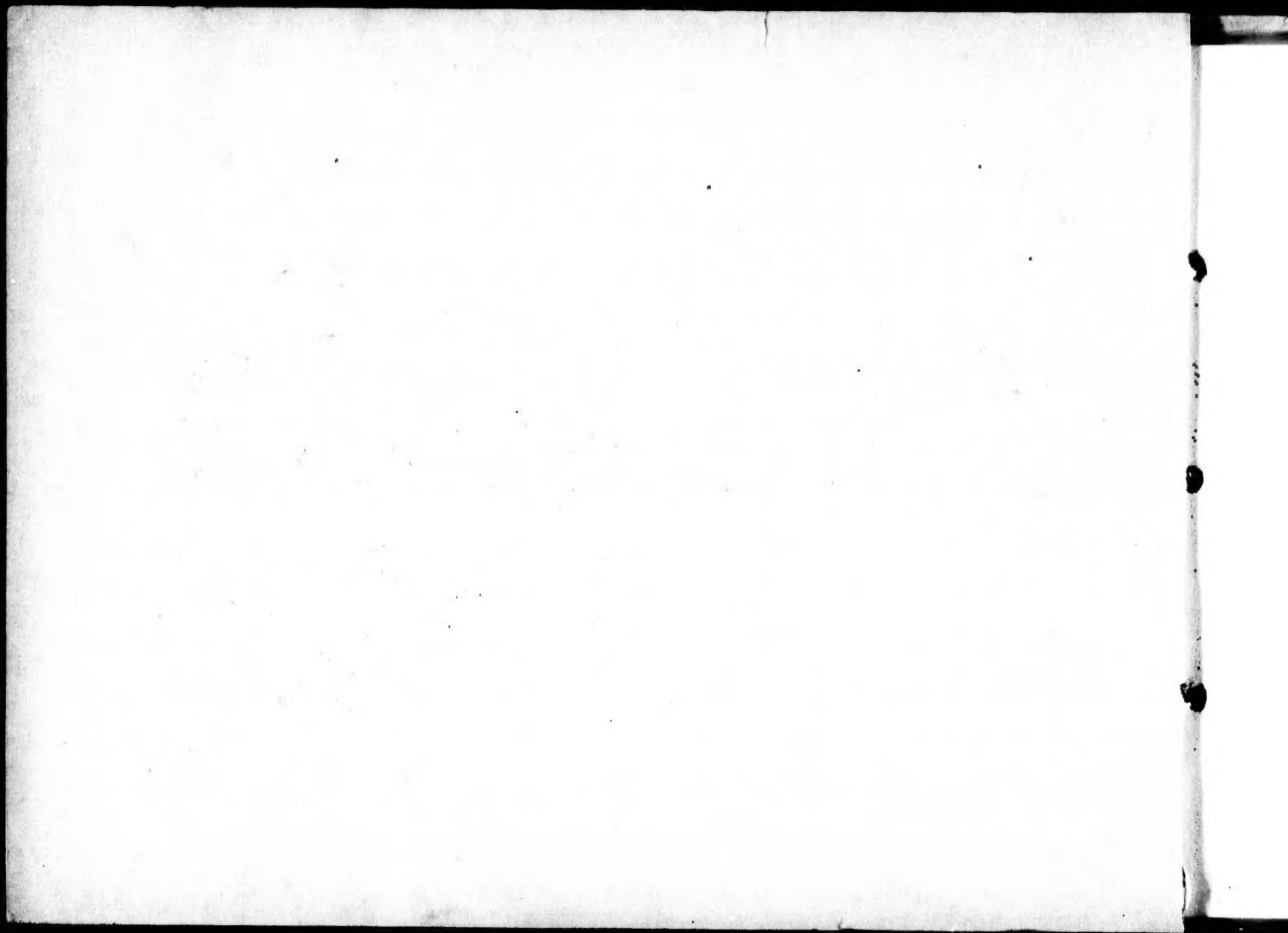


Kitchener, Ont.

SOUVENIR
of KITCHENER, ONT.





SOUVENIR OF

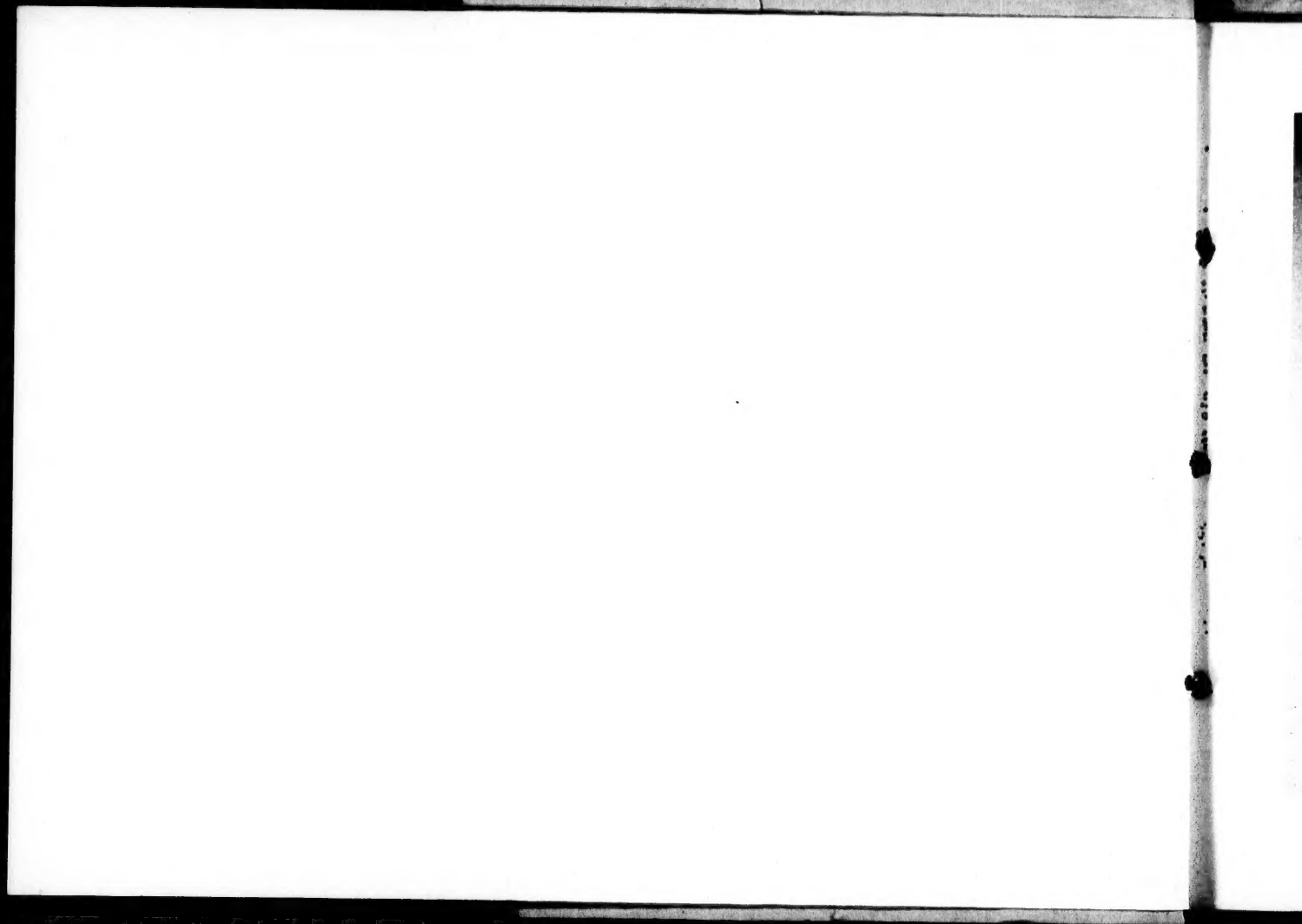
Berlin

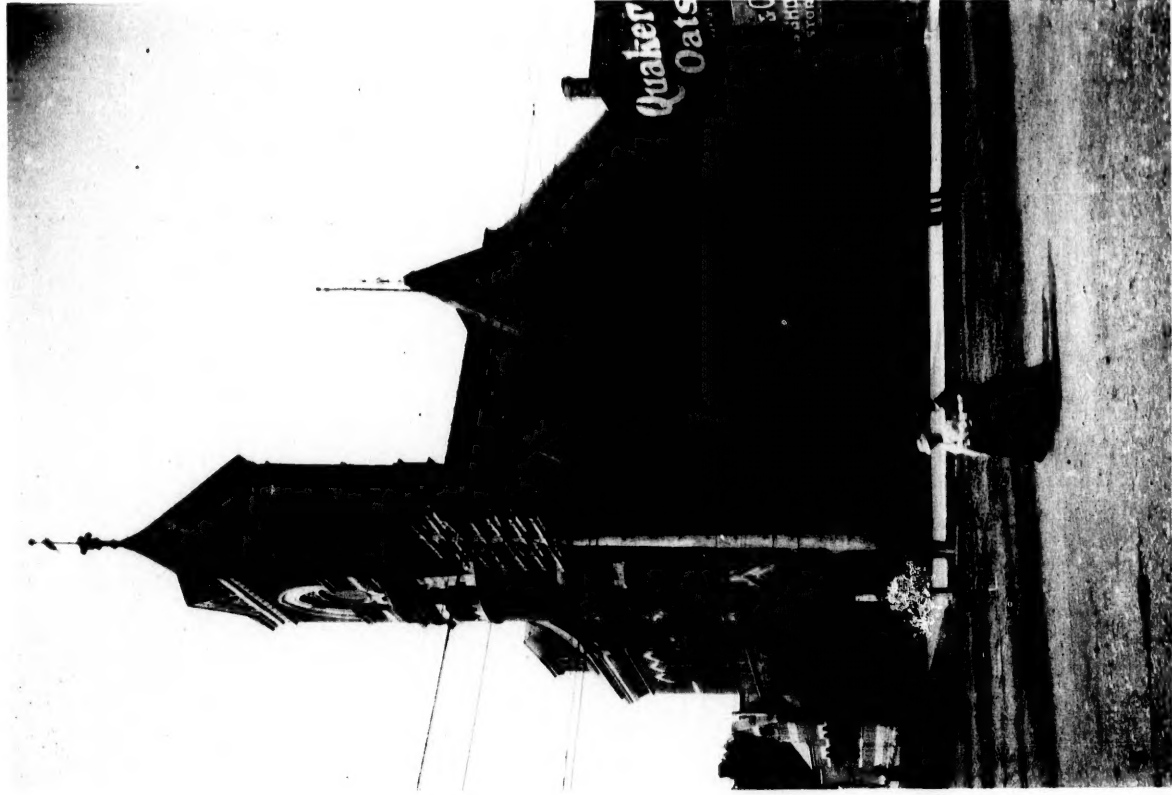
Ontario.

PHOTO-GRAVURES

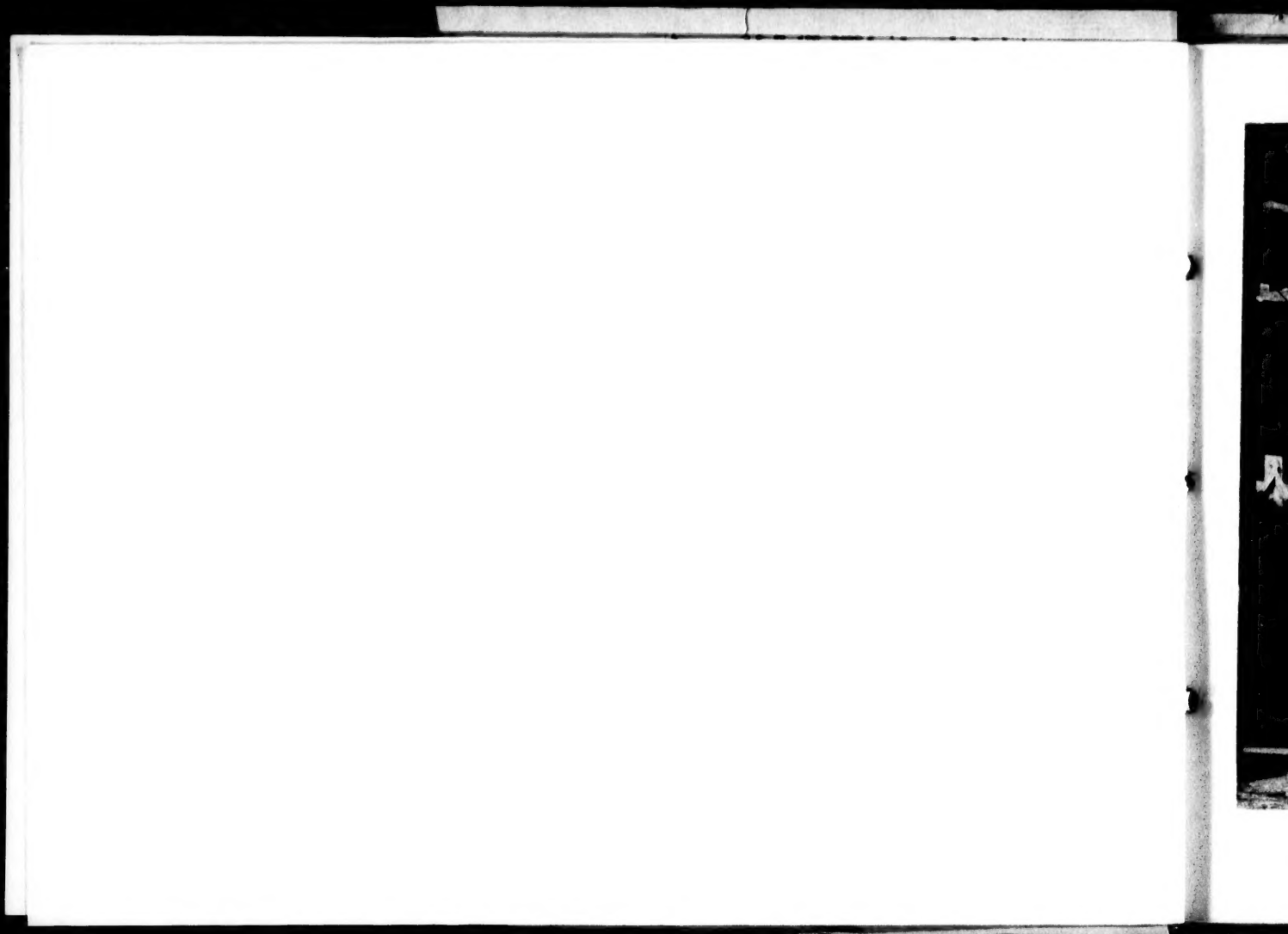


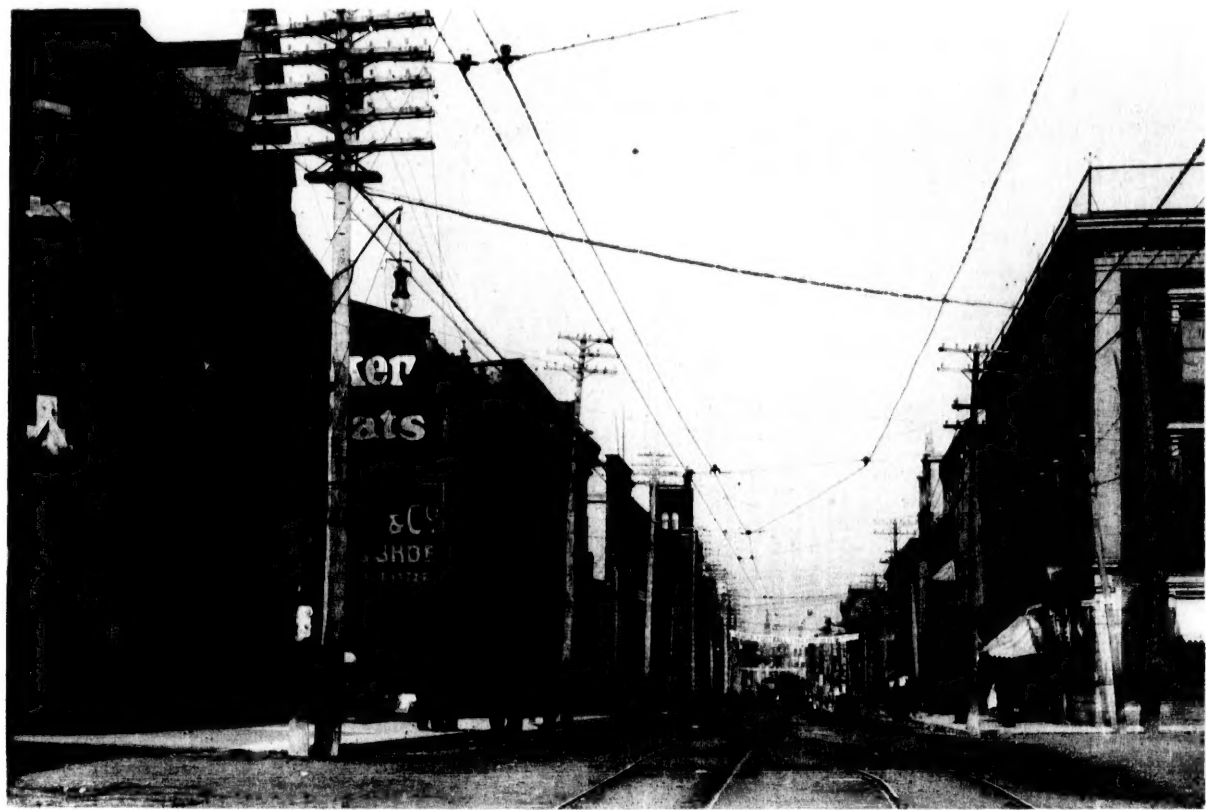
PUBLISHED BY
F. I. WEAVER & CO.,
BERLIN, ONT.



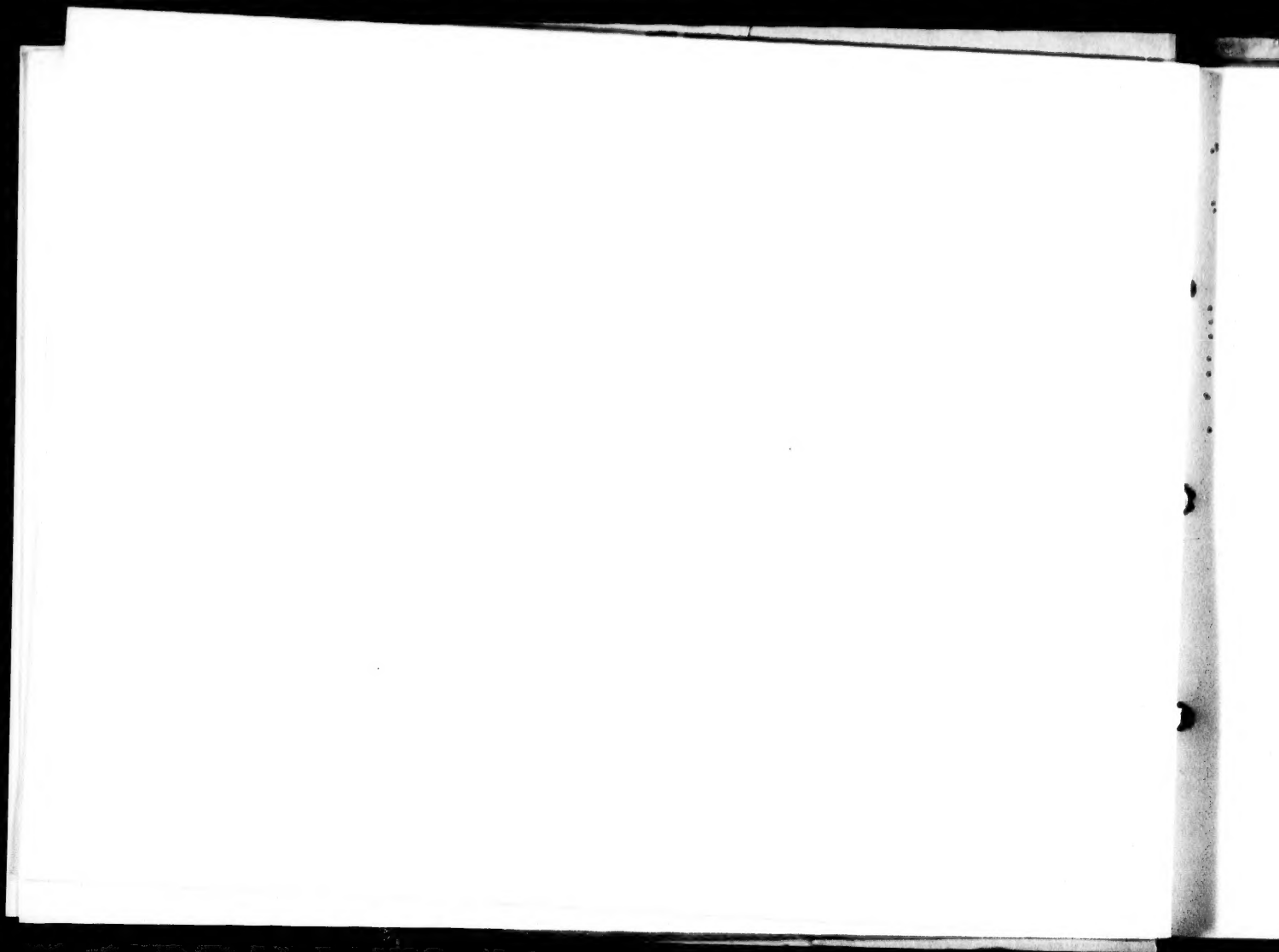


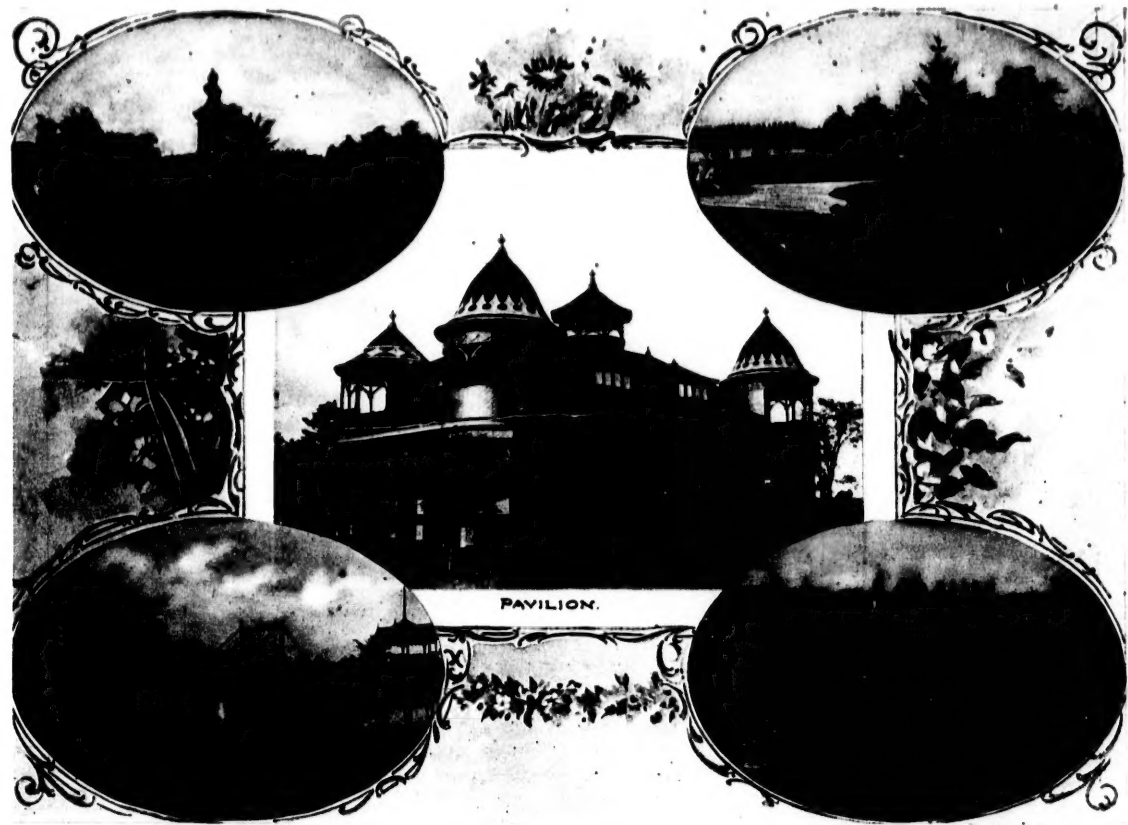
POST OFFICE.



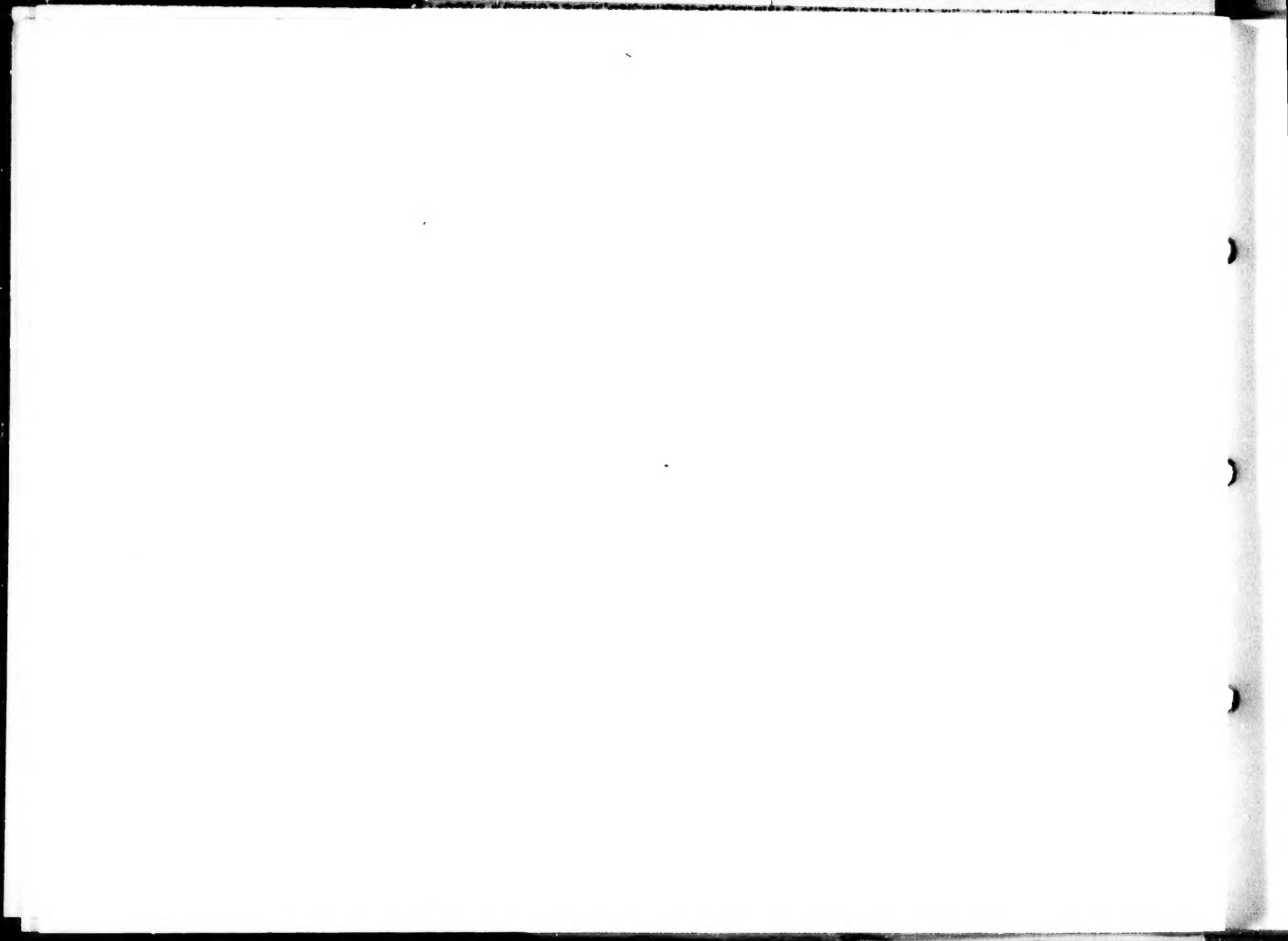


KING STREET, LOOKING WEST.



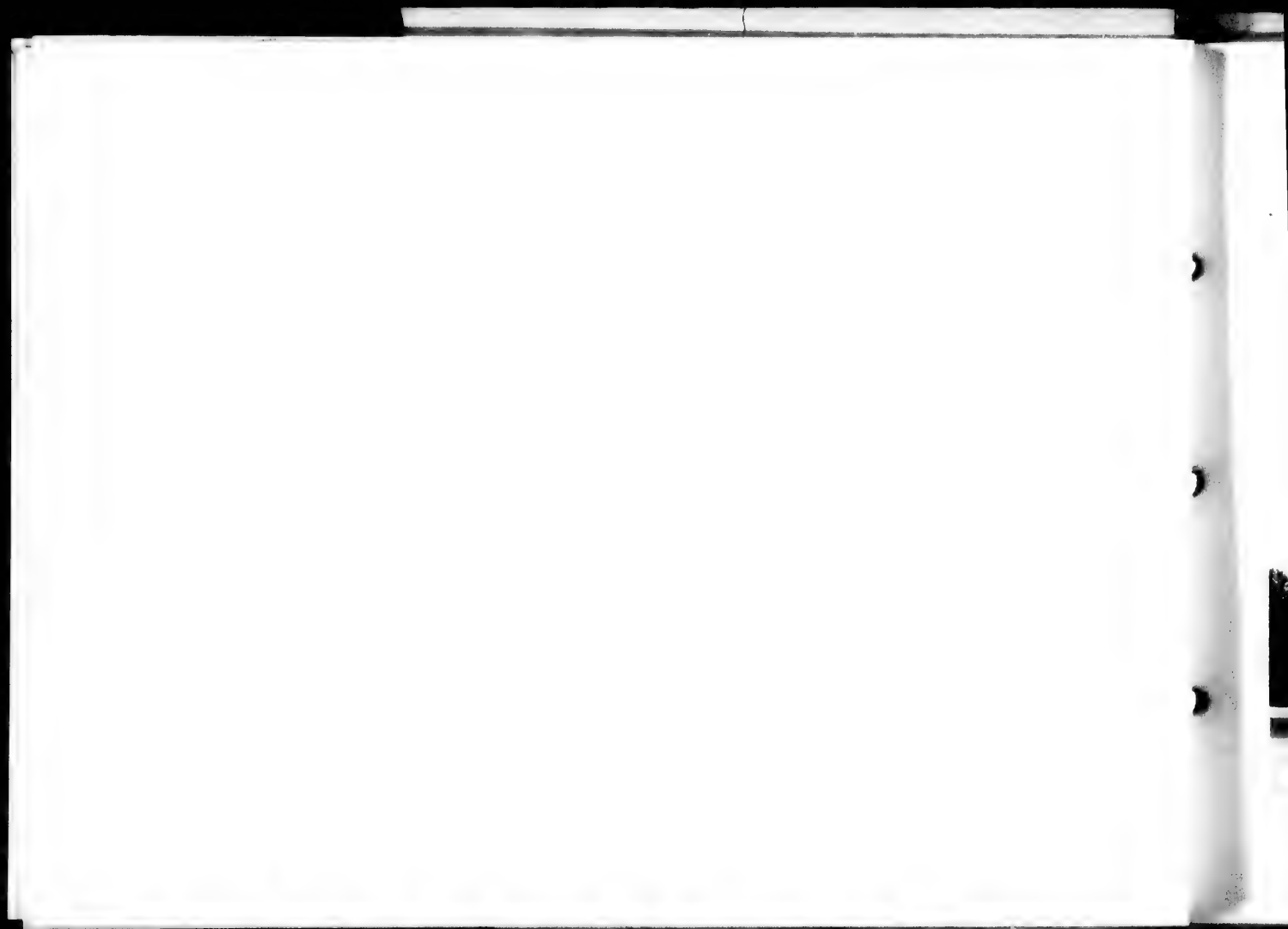


VICTORIA PARK.



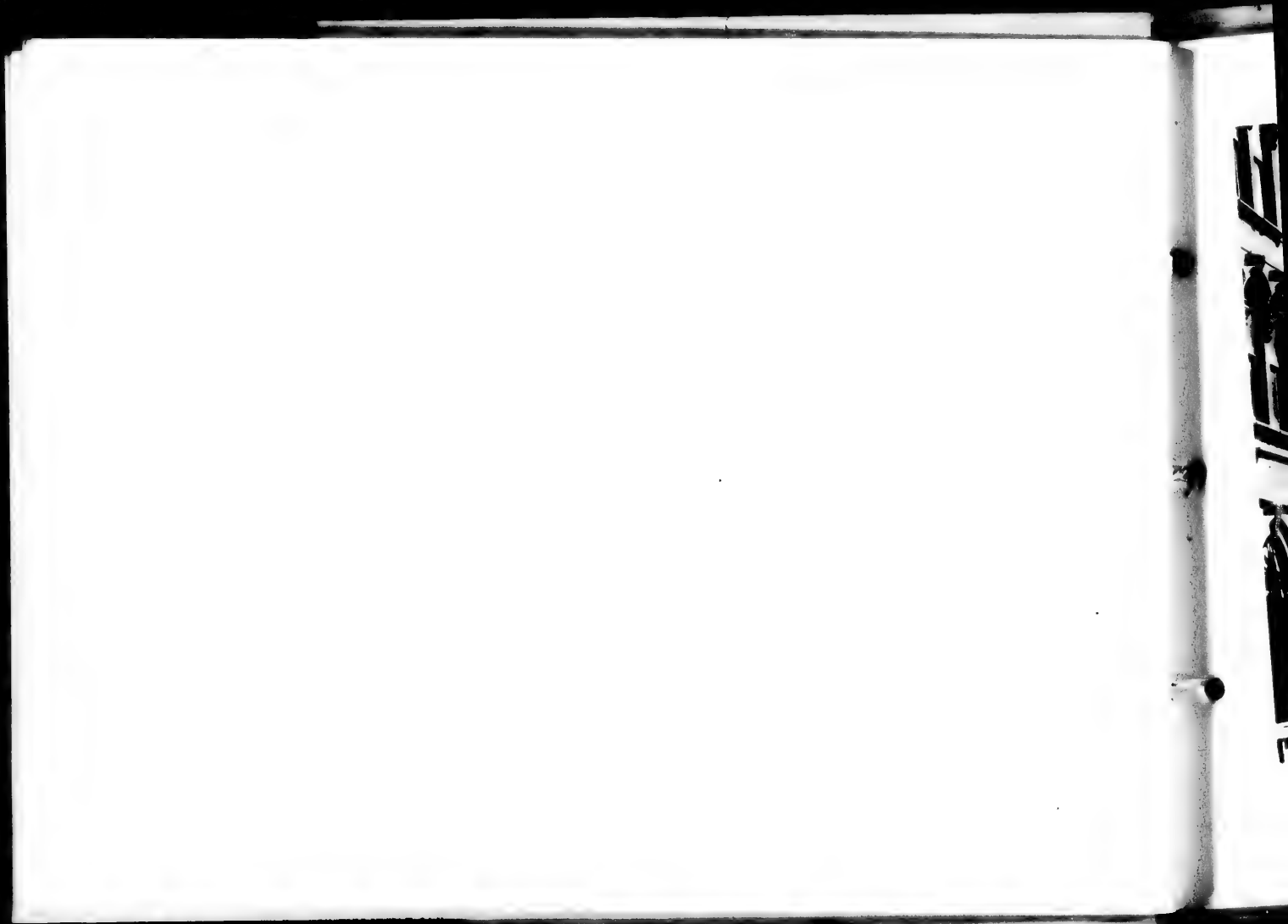


COURT HOUSE.



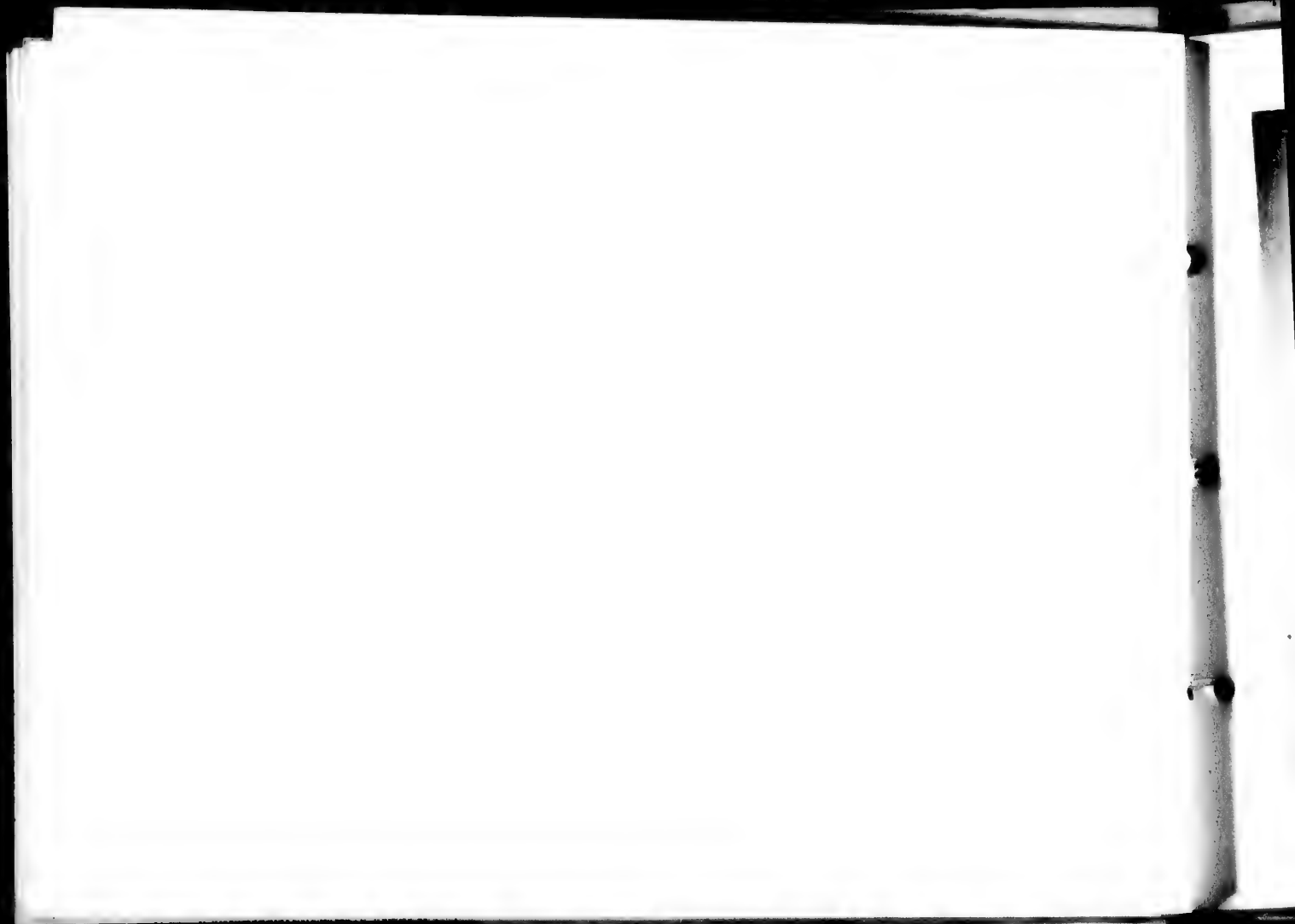


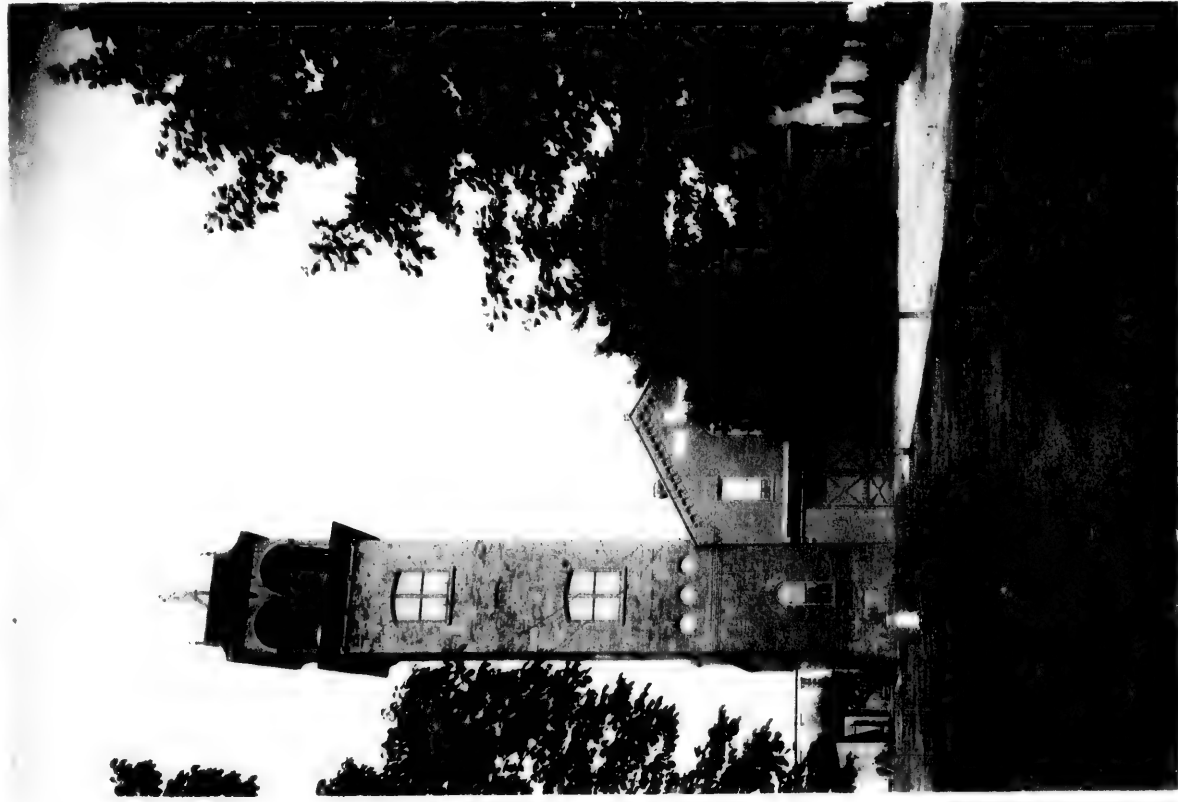
TOWN HALL.



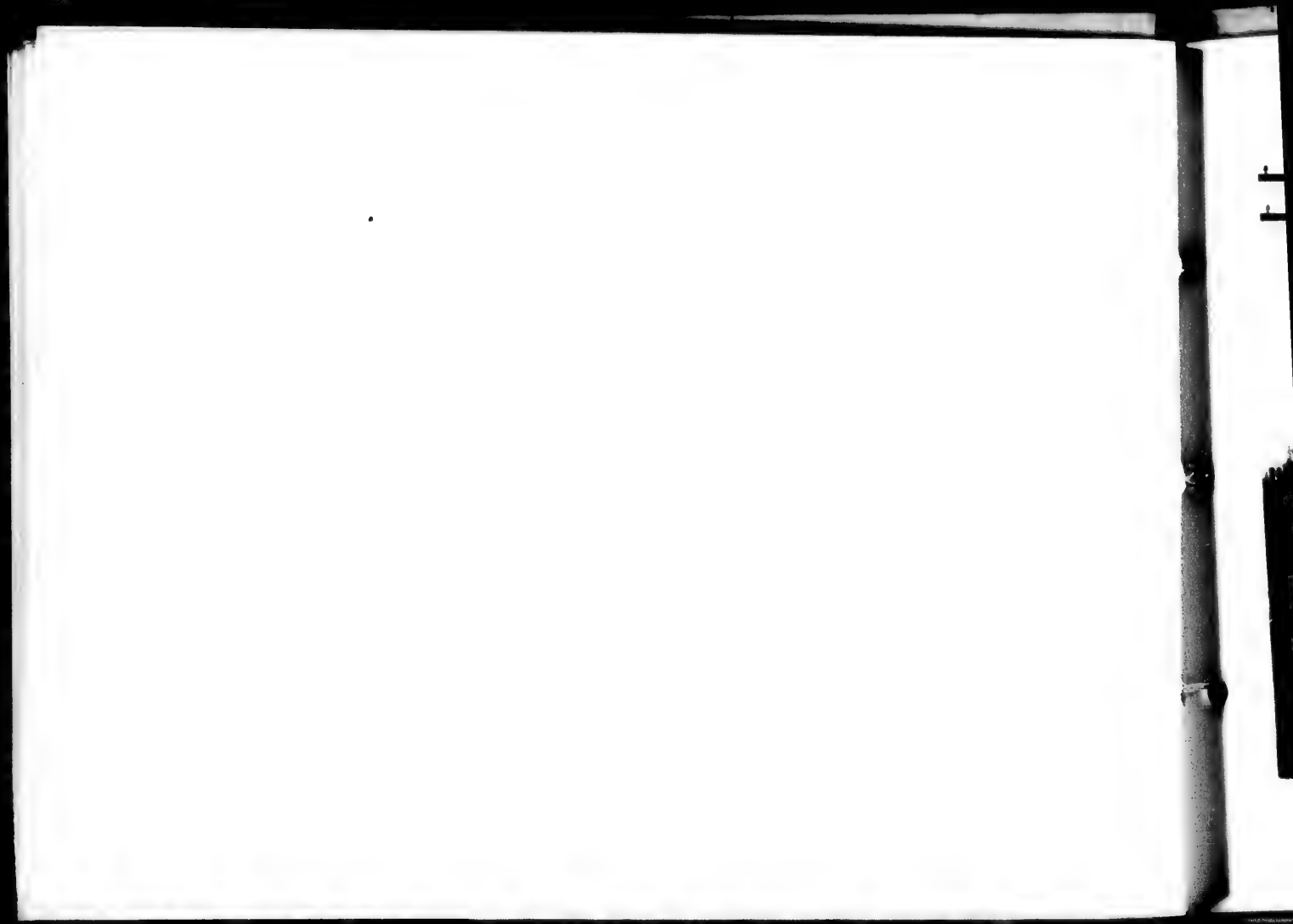


KING STREET, LOOKING EAST.



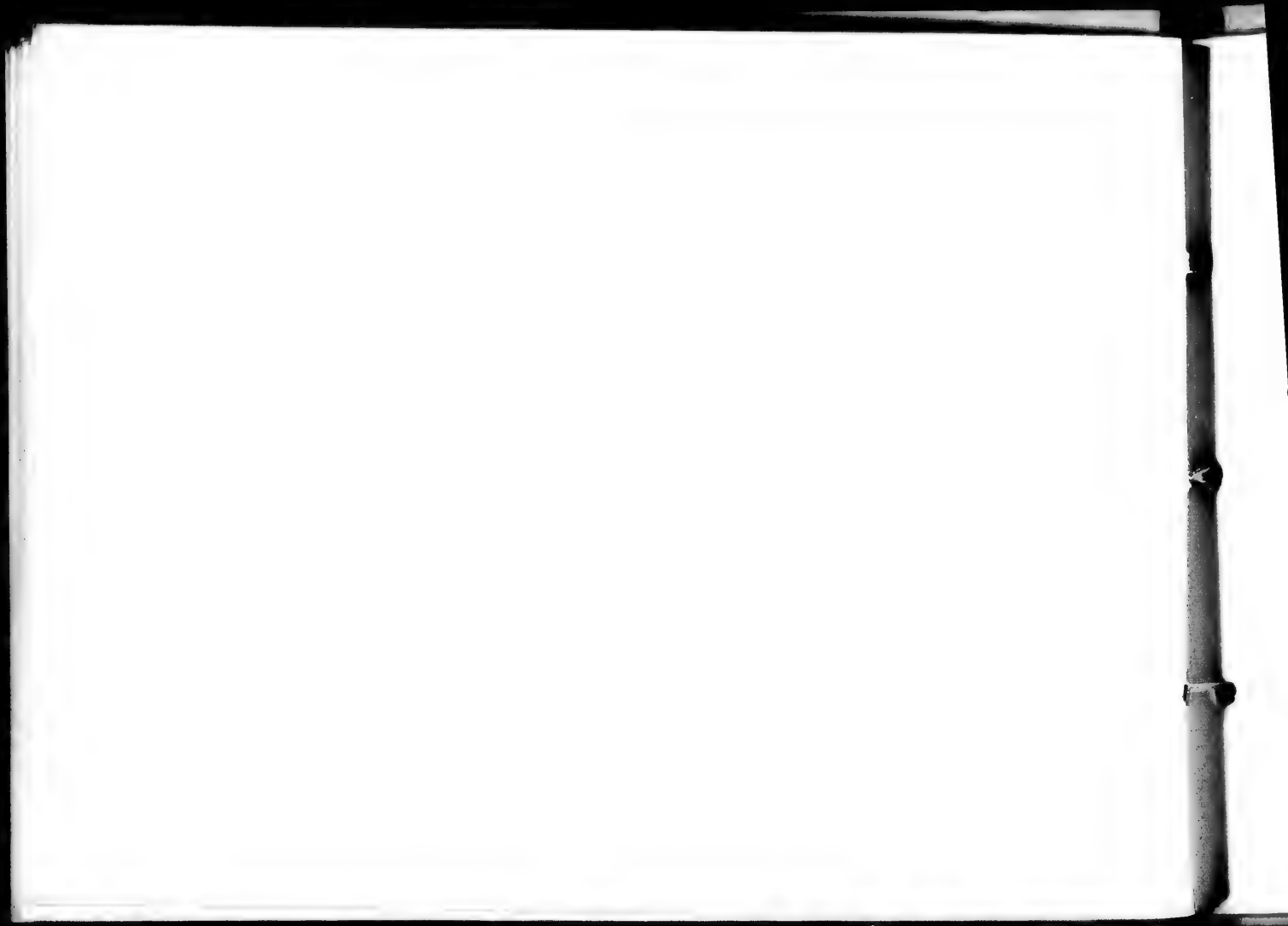


FIRE STATION.





INDUSTRIAL BERLIN, FROM MARGARET STREET BRIDGE.





BERLIN AND WATERLOO HOSPITAL.



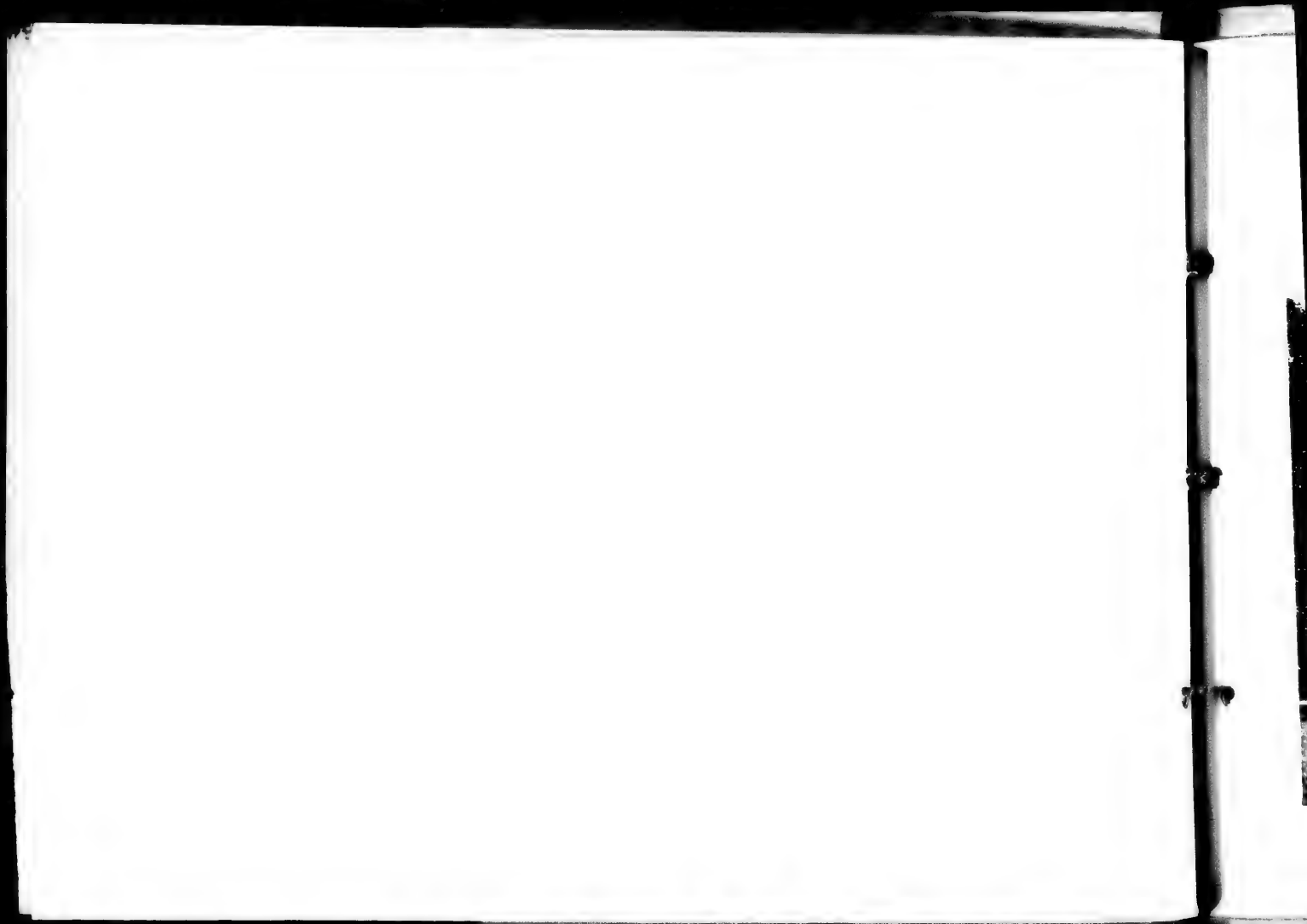


ST. JEROME'S COLLEGE.



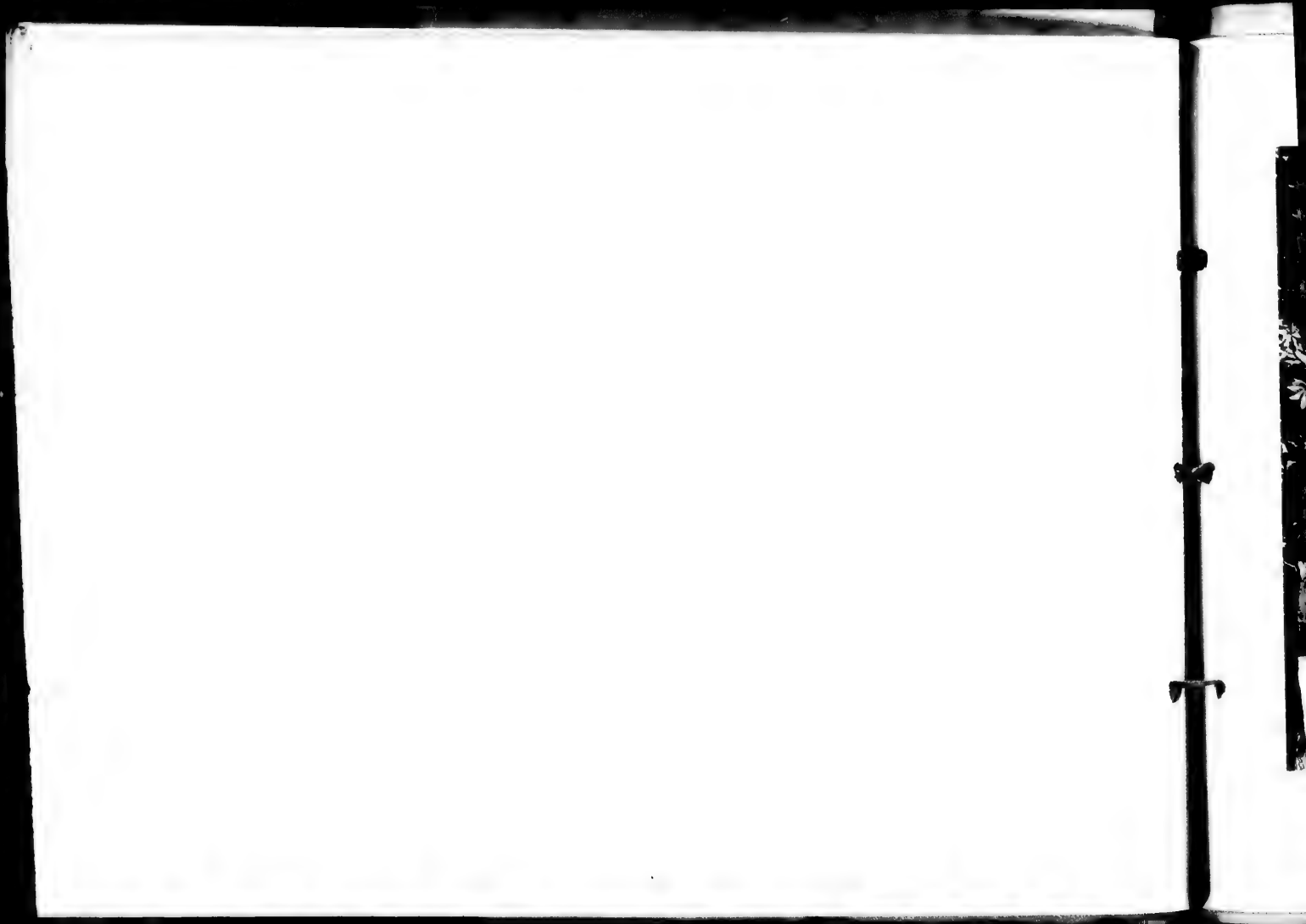


COLLEGIATE AND TECHNICAL INSTITUTE.



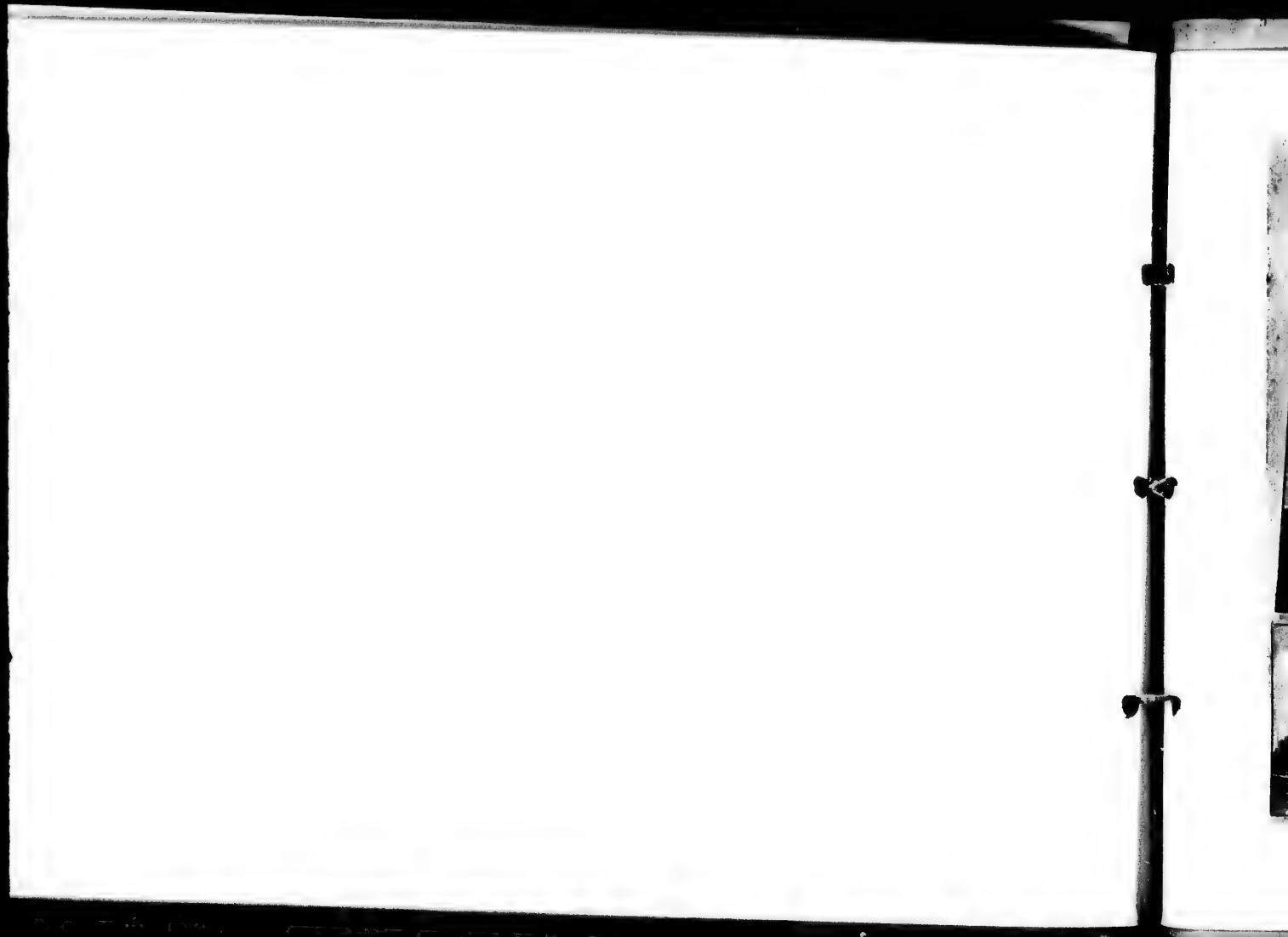


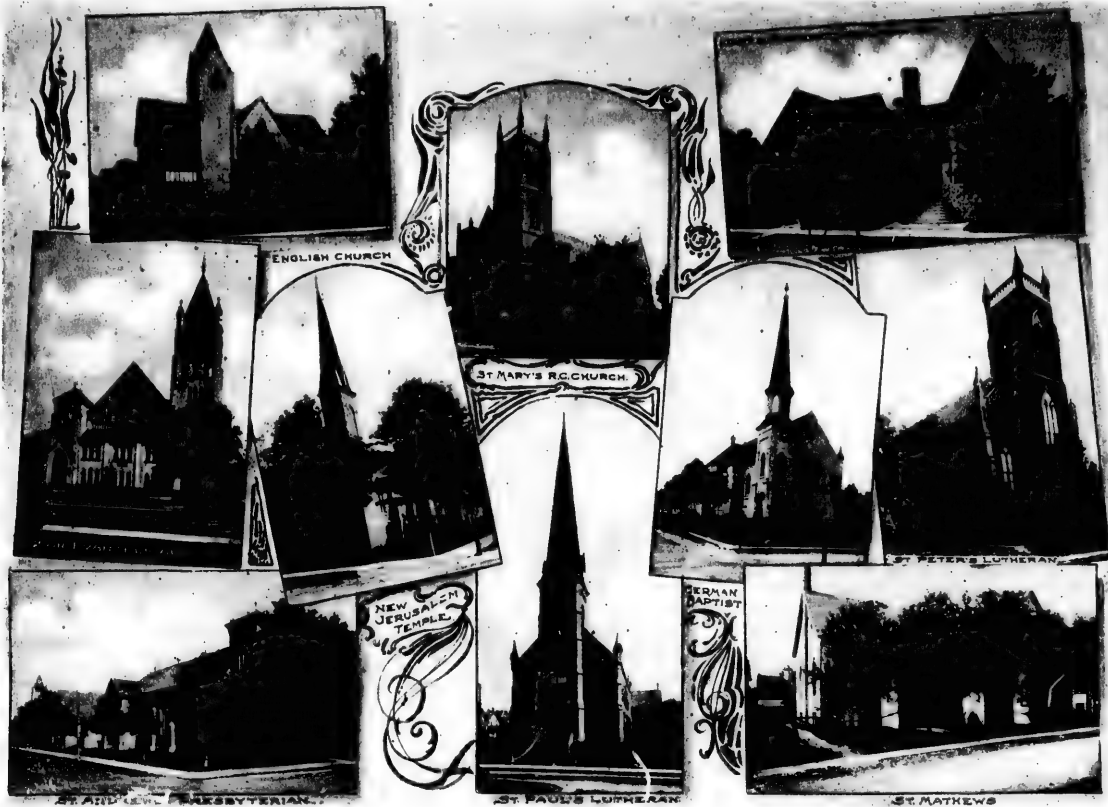
CENTRAL SCHOOL.



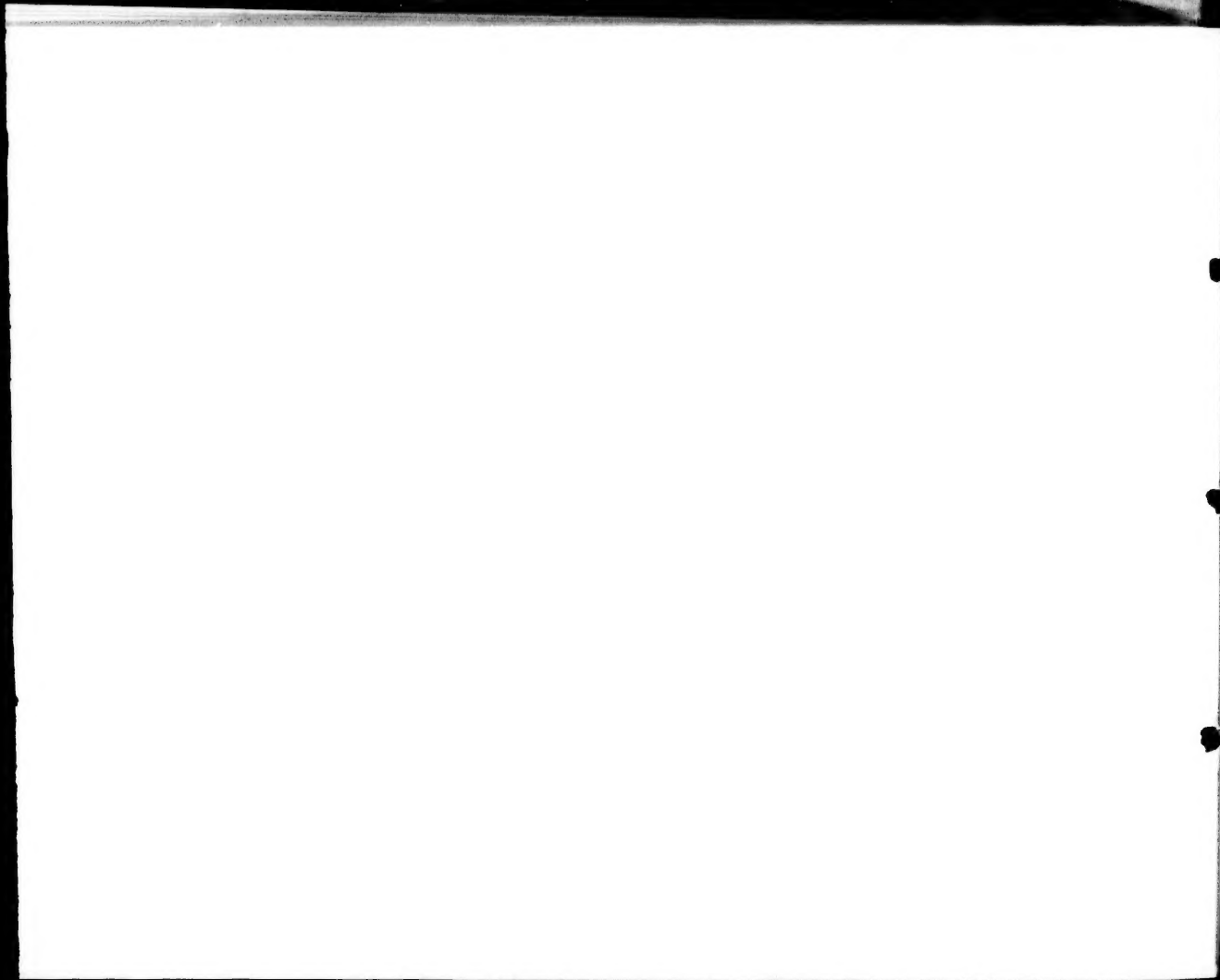


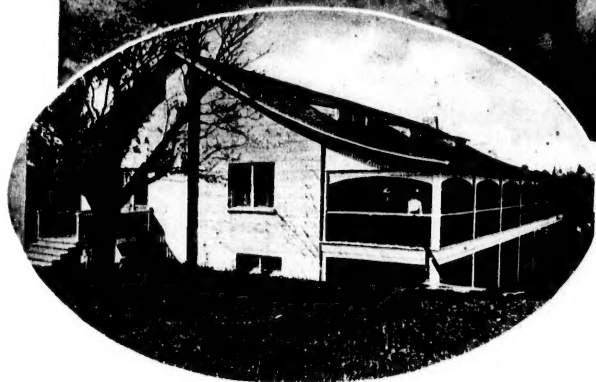
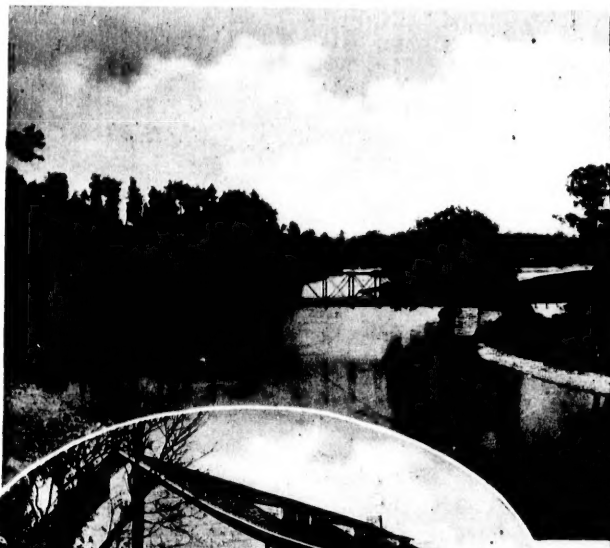
QUEEN STREET RESIDENCES.



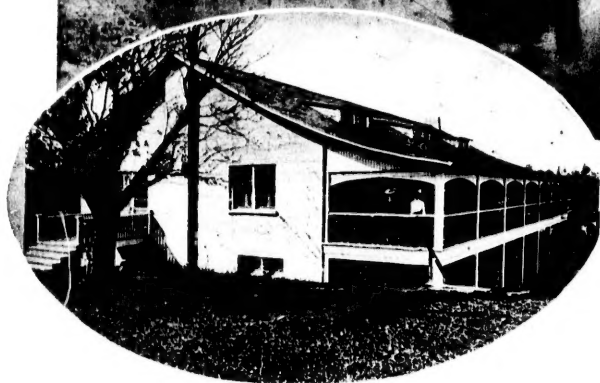


CHURCHES.





THE CASINO.



THE CASINO.

RIVERSIDE



RIVERSIDE PARK—BRIDGEPORT.